

ComputerForumz
Your Computer Source



computerforumz.com

Presents



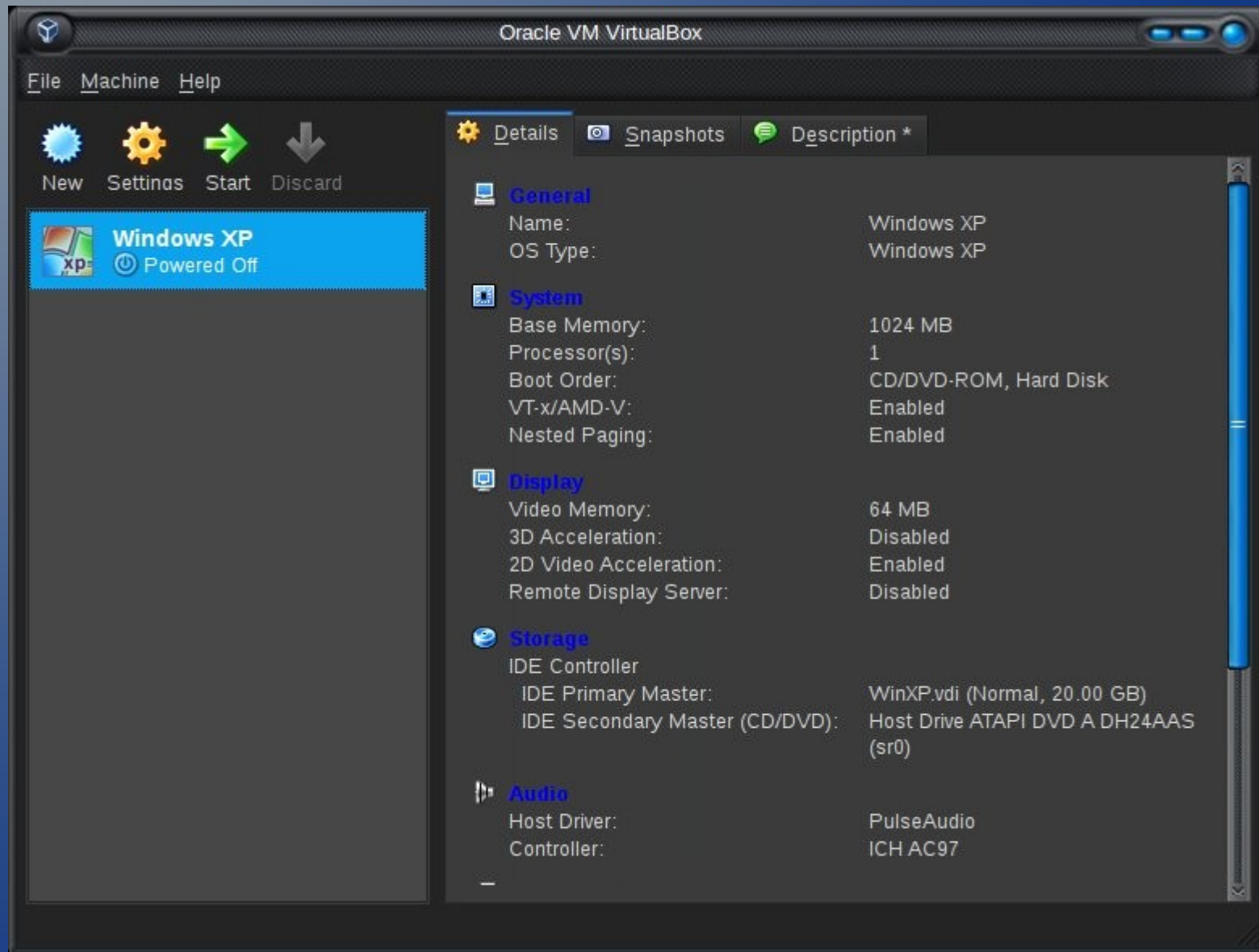
System Requirements

- Minimum recommendations:
 - Any single core CPU, 2 GHz or faster.
 - 2 GB of RAM.
 - Between 20 GB and infinity of free hard drive space.
- Linux, Mac (Intel), and Windows versions are available.
- Available for 32 or 64-bit systems.

<http://www.virtualbox.org/>

- Download VirtualBox directly.
- Select the appropriate version for your Linux distribution.
- Do not install the VirtualBox OSE (Open Source Edition).
- The OSE version has no USB support.
- Any operating system installed in VirtualBox is referred to as a “guest” OS.

The Main Screen



Creating a New Virtual Machine

- Click on the “New” button.
- Click “Next.”
- Give your new guest OS a name:
 - *WinXP*, for a Windows XP install.
- Select the appropriate OS type and version.
- Click “Next.”
- Set the amount of memory the guest OS can access (512 MB minimum).

Create the Virtual Hard Disk

- This process will build the *.vdi* file where your guest OS will be loaded.
- If this is a new install, select “Create new hard disk.”
- If you have a *.vdi* file created already, select “Use existing hard disk.”
- For this demonstration, we will be creating a new hard disk.

Hard Disk Storage Types



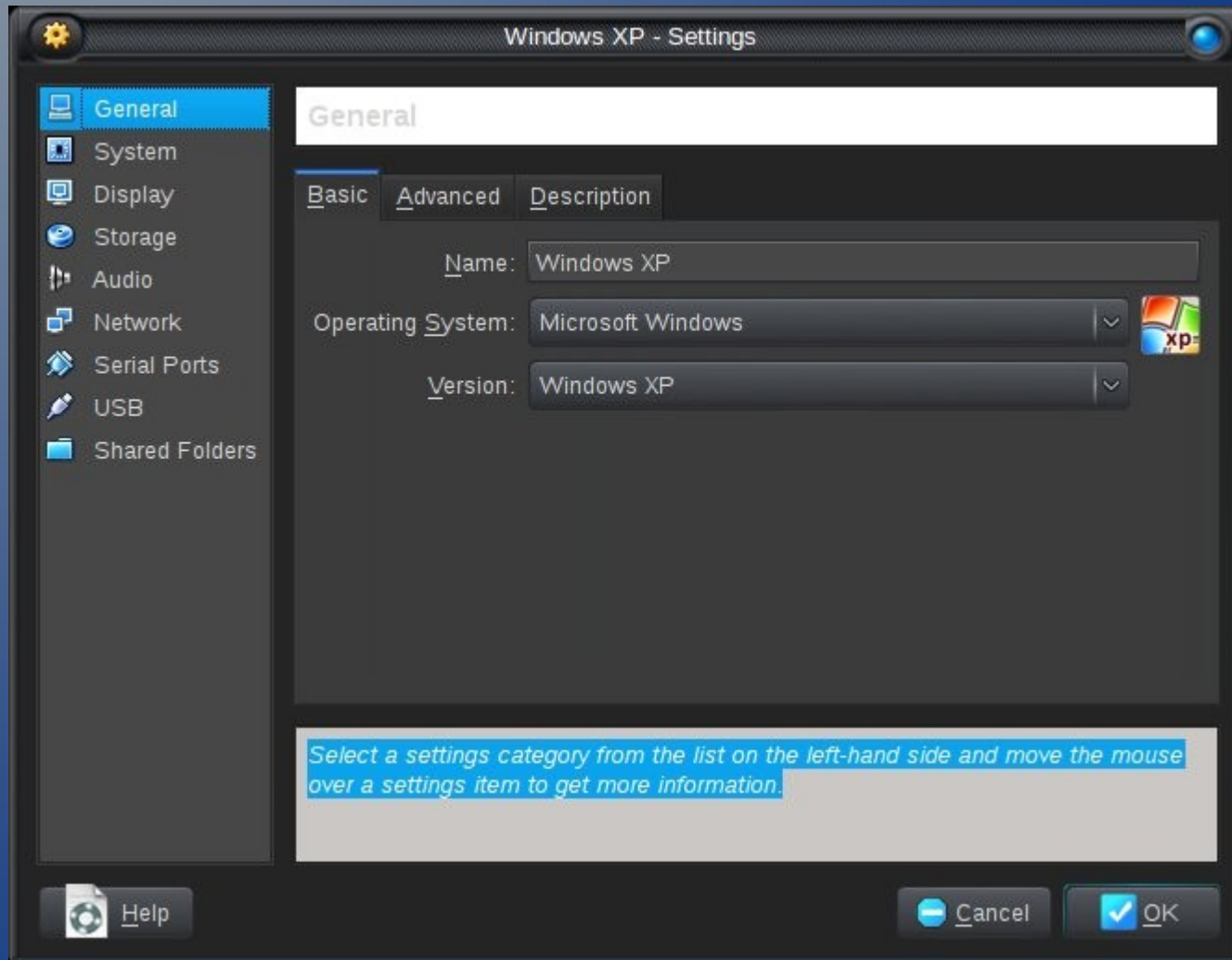
Dynamically Expanding Storage

- A non-fixed size / variable size *.vdi* file.
- Advantage:
 - Uses less physical hard drive space.
- Disadvantage:
 - As the file expands or contracts with use, it can effectively slow down your computer.

Fixed-Size Storage

- Creates a *.vdi* file of a specific set size.
- Advantages:
 - Speed, as mentioned previously.
 - The amount of free space available to the virtual machine will be displayed in Windows XP.
- Disadvantage:
 - Size. Like an actual physical hard drive, users can only utilize the amount of fixed space determined by the size of the *.vdi* file.

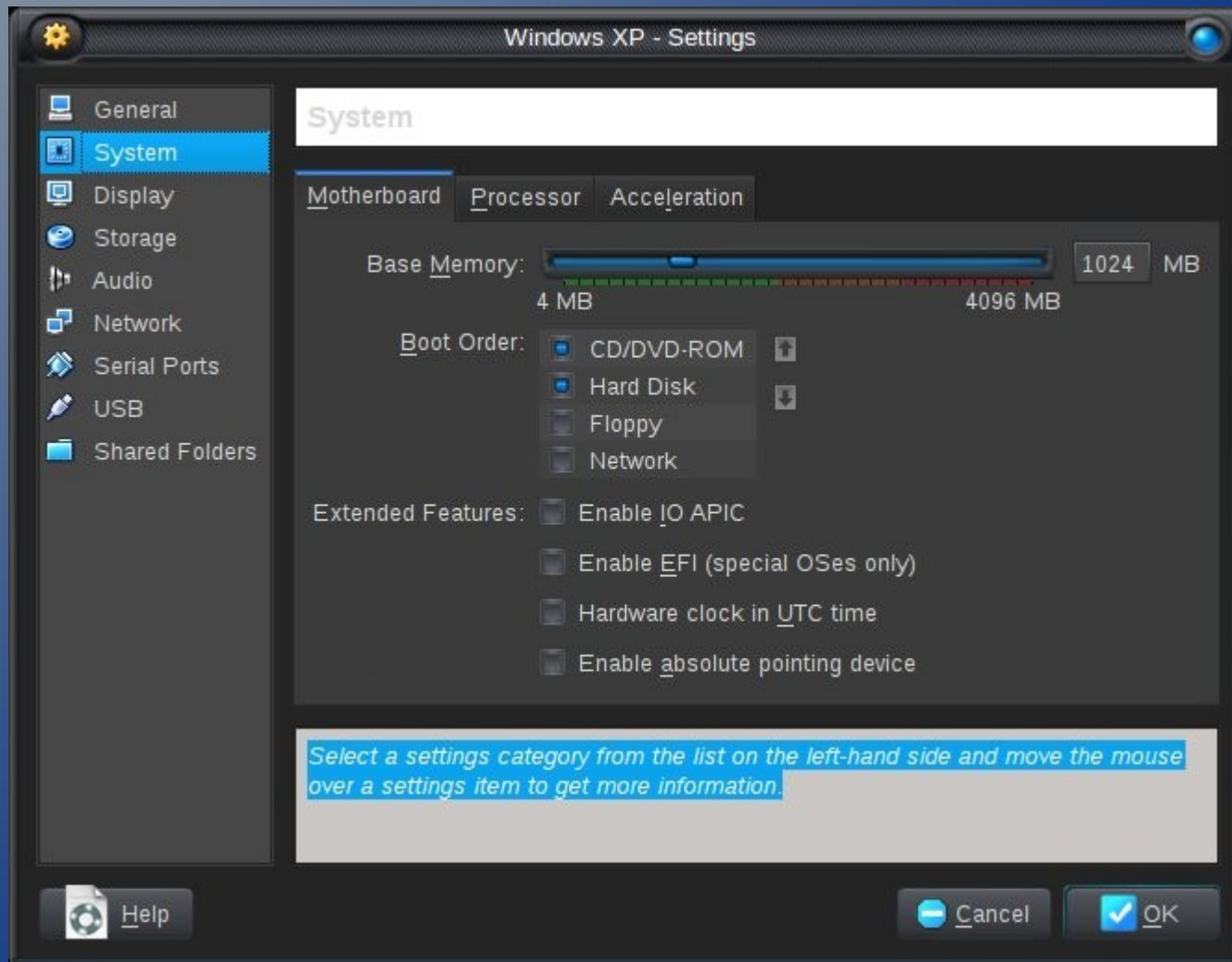
General Settings Screen



Write a Description

- Click on the “Description” tab.
 - Write a brief summary of your new install.
 - Example:
 - *Windows XP 32-bit (SP3).*
- The default settings on the “Basic” and “Advanced” tabs should be sufficient.
- Click on “System” settings.

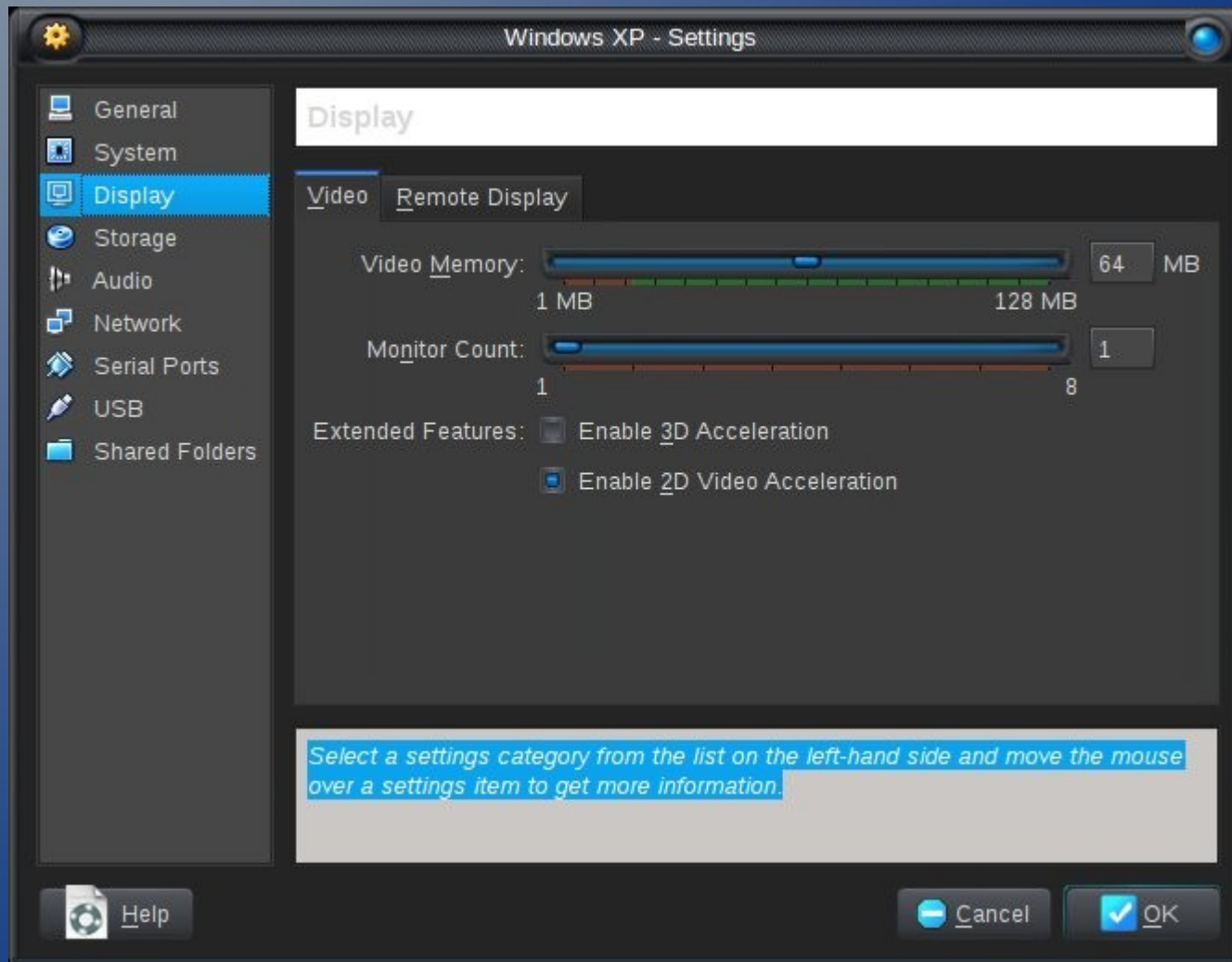
System Settings Screen



Change System Settings

- Change the boot order.
 - Remove the floppy drive if necessary.
- The Motherboard default settings should be adequate.
- Under the “Processor” tab, one CPU is all that is required.
- The “Acceleration” tab default settings can be altered depending on your system. The default settings are usually fine.

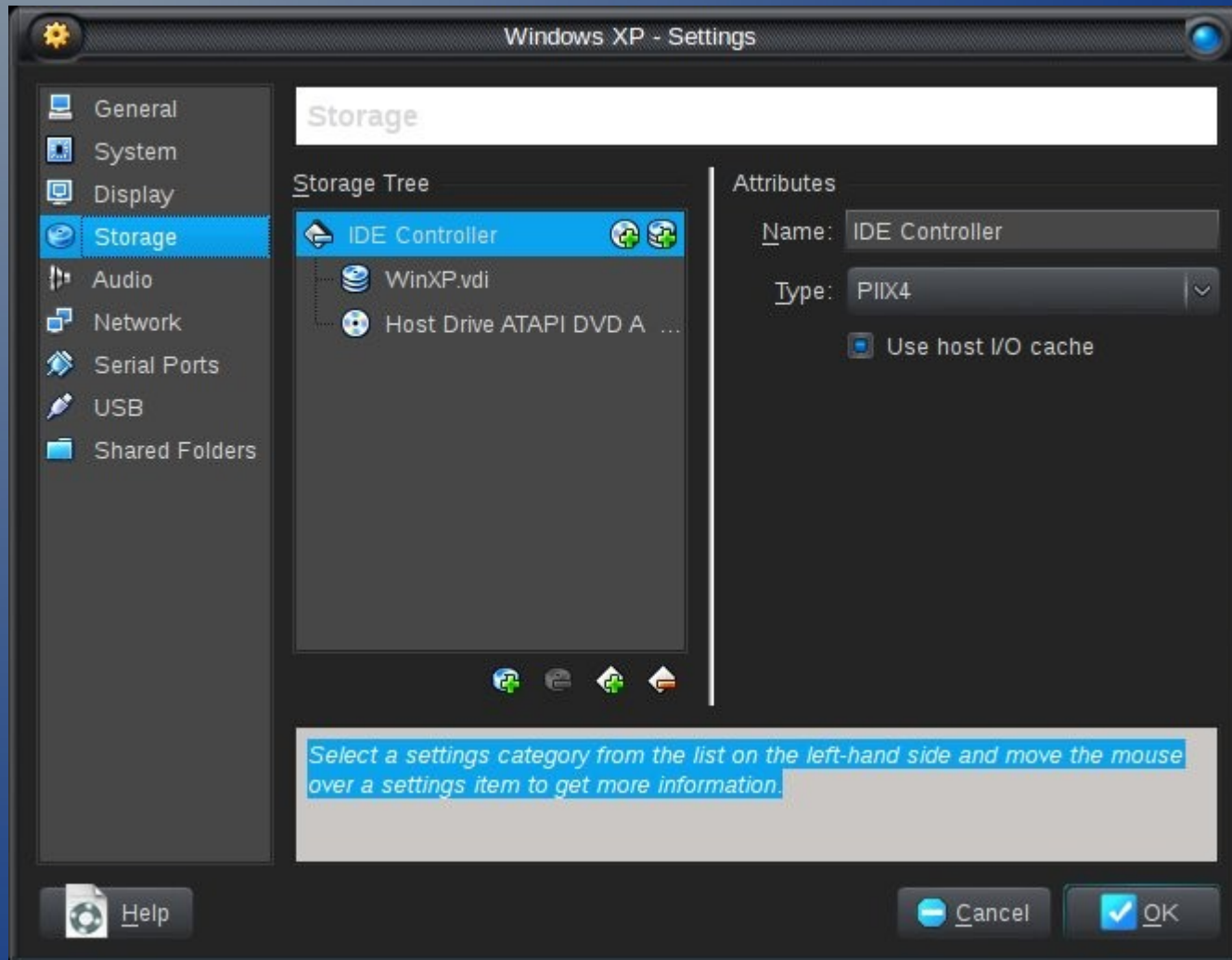
Display Settings Screen



Increase Display Settings

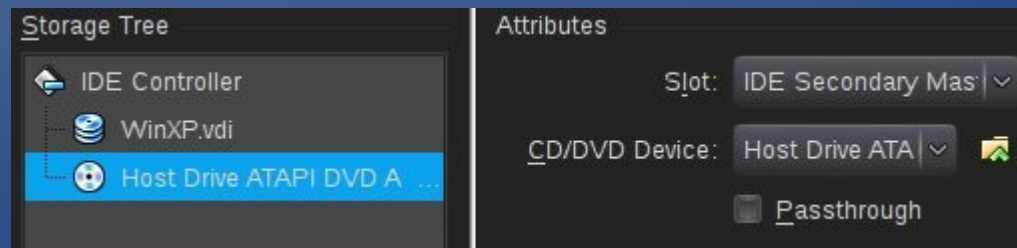
- Set “Video Memory” to 32 MB minimum.
- Click the “Enable 2D Video Acceleration” box to increase your video performance.
- The 3D acceleration is still experimental at this stage of development.
 - This option may be used if the graphics drivers for the system are available in the Guest Additions install, which will be covered later in this presentation.
- “Remote Display” can be left unchecked.

Storage Settings Screen

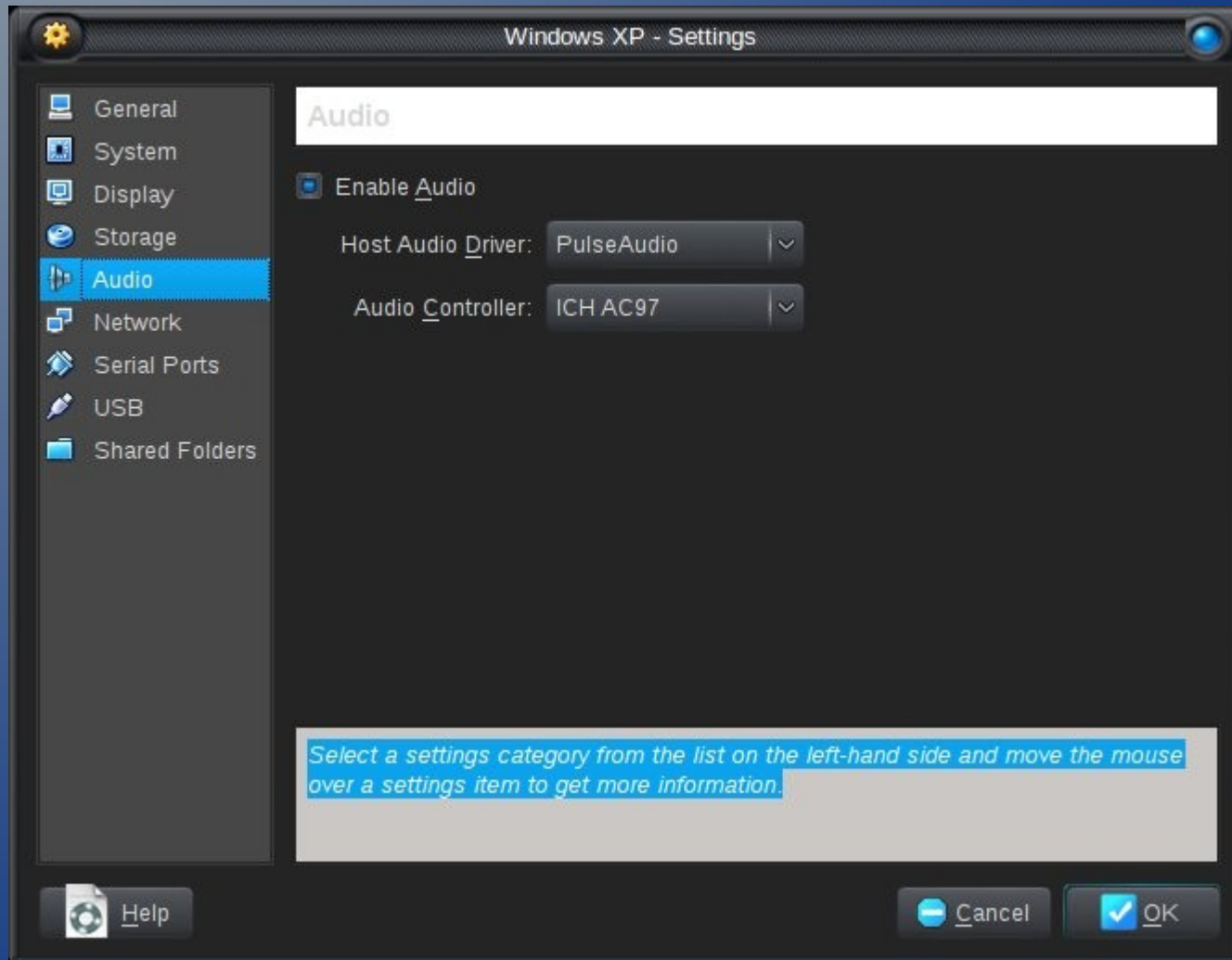


Set Optical Drive

- Make certain that the “CD/DVD Device” is set to your physical optical drive.
 - If not, open the drop down box and select your drive from the list.



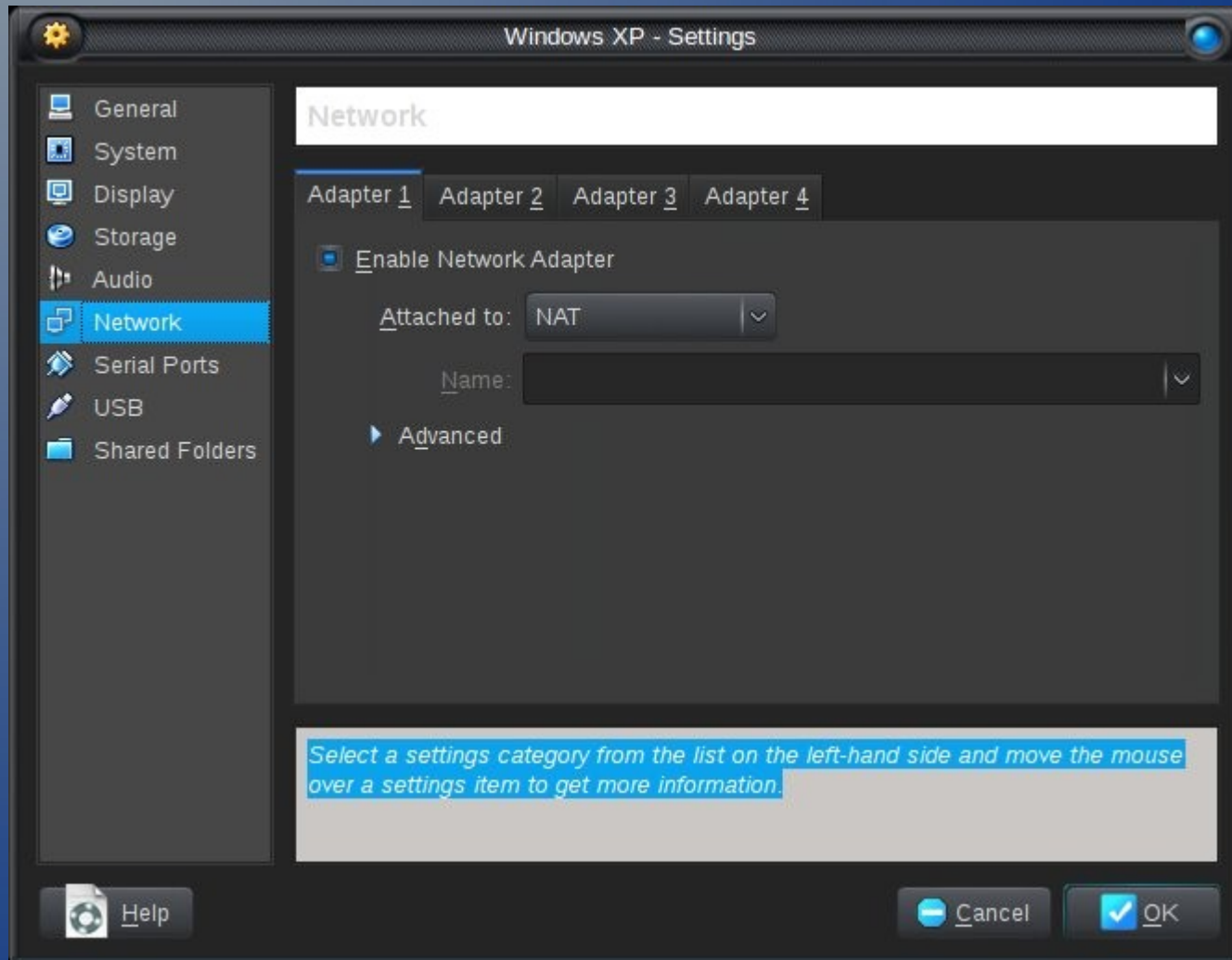
Audio Settings Screen



Adjust Audio Settings

- In most cases, you will want to have audio capabilities enabled in your guest OS.
- The default settings are usually correct.
- Make sure the box is checked.
- No further actions should be necessary.

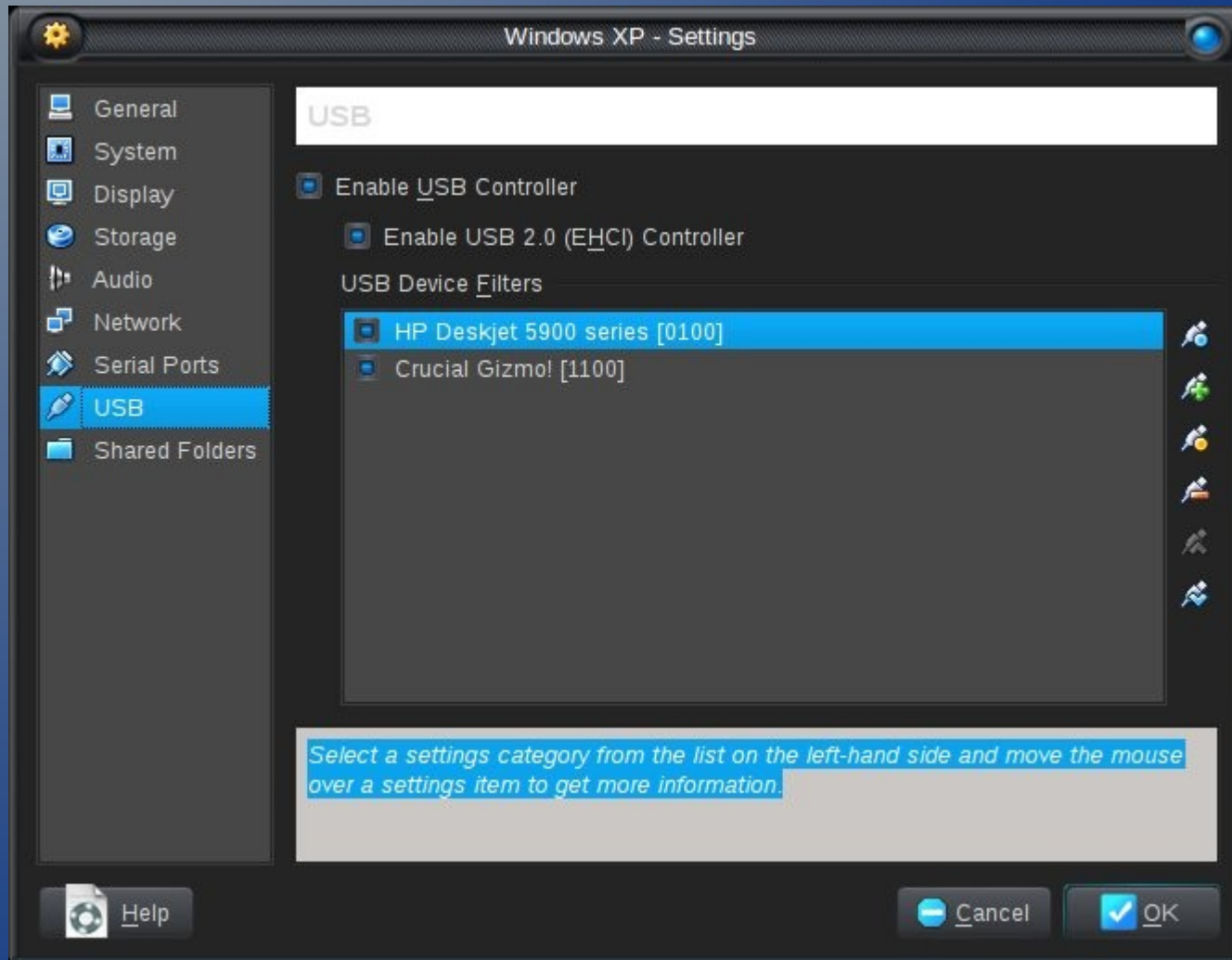
Network Settings Screen



Network Connection Settings

- By default the network connection is enabled.
- Uncheck this setting if you do not want your newly installed OS to connect to the Internet.
- It may be necessary to connect to the Internet if activation of the guest OS is required.
- This setting can be changed again later.

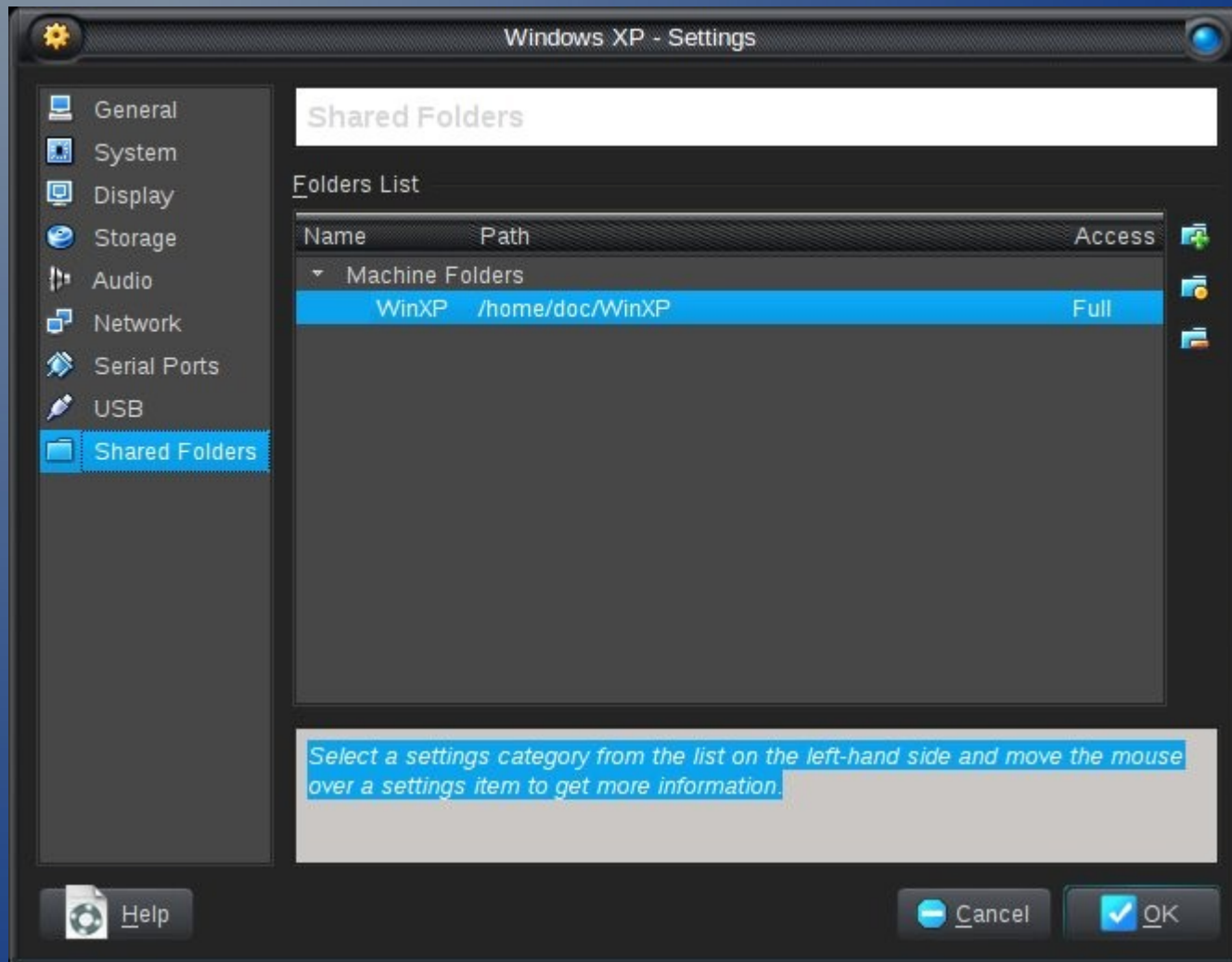
USB Settings Screen



Set USB Rules

- You must tell VirtualBox which USB device(s) can have access to the guest OS.
- The USB device must be attached to and recognized by your Linux host OS.
- Click on the USB icon with the “+” symbol and select the device you wish to add.
- If you want to use your USB printer in a Windows guest OS, you must install the appropriate print drivers in Windows.

Shared Folders Settings Screen



Setting Up a Shared Folder

- A shared folder allows you to move files back and forth between the host and guest OS.
- Create a folder in your Linux Home folder.
 - Give it an unique name, like *WinXP*.
 - Do not attempt to use your entire Linux Home folder as a shared folder.
- Click on the Folder icon with the “+” symbol and add the folder you created in your Linux Home folder.
- Click “OK” to accept the settings.
- Click “OK” to close the Settings dialog box.

Install the Guest OS

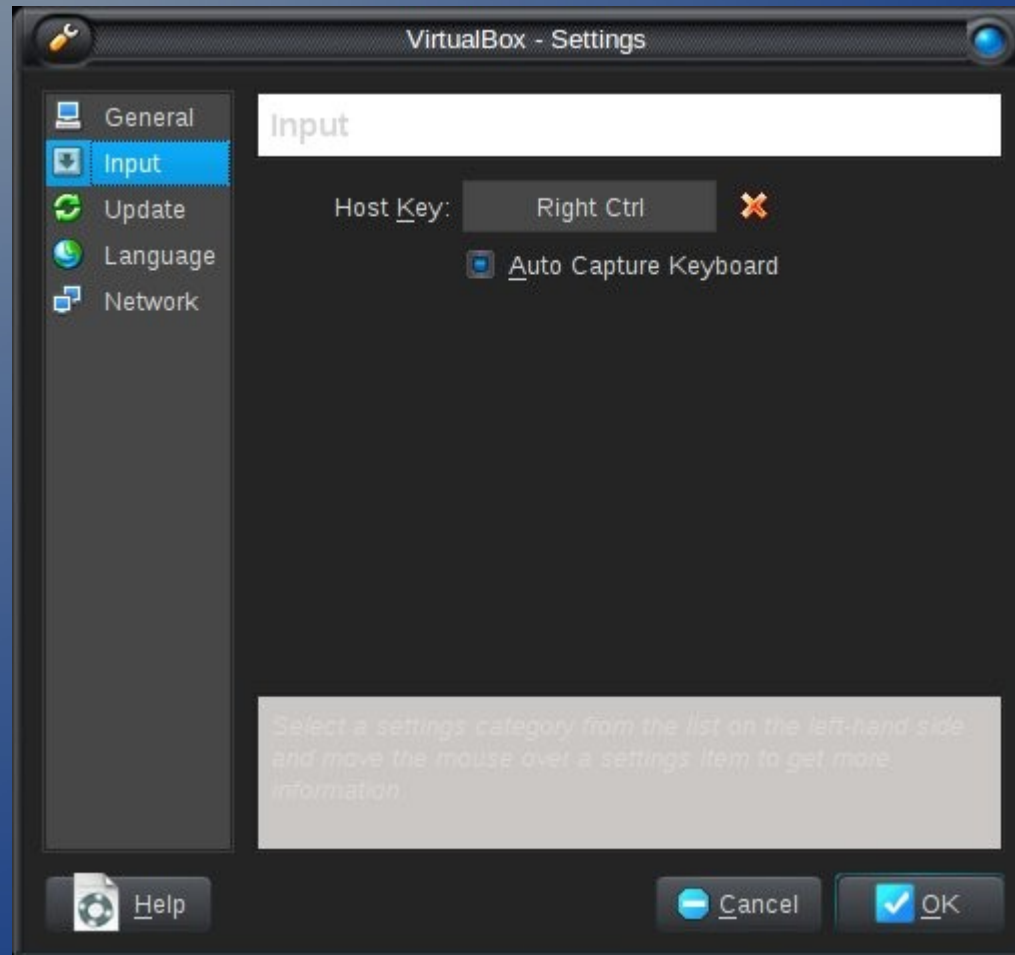
- Insert your Windows XP install disk in your optical drive.
- You must have a legitimate copy of XP, Vista or 7 for registration and activation.
- Windows 3.1x, 95, 98 and ME can be loaded, but are not supported by the Guest Additions.
 - These guest operating systems will only be displayed at a resolution of 800 X 600.
- To begin installing Windows XP as a guest OS click “Start” on the Main screen.

- My Documents
- Nero StartSmart
- Image Composer 1.5
- My Computer
- Peggle Deluxe
- Invaders95
- My Network Places
- Plants vs. Zombies
- MailWasher Free
- Recycle Bin
- Registry Mechanic
- MGI PhotoSuite III
- Internet Explorer
- The Print Shop 12
- Microsoft FrontPage
- Bejeweled 2 Deluxe
- Virtual CloneDrive
- Professor Franklin
- Foxit Reader
- Winamp
- Uno
- Microsoft Security...
- Obama Jokes
- Windows Media Player
- Mozilla Firefox
- CDLabel
- WinXP Shared Folder



Microsoft
Windows xp

Understanding the Host Key



The Function of the Host Key

- The Host key is the control key [Ctrl] located on the right hand side of your keyboard.
- It is used to toggle on and off certain functions within VirtualBox.
 - For example, you will need to use the Host key to switch your mouse pointer between your host OS and guest OS prior to installing the Guest Additions.

Installing Guest Additions



Install Guest Additions Program



The Installation Process

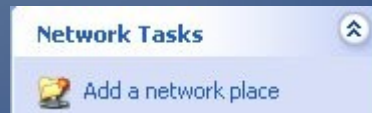
- Click “Next” to begin installing the Guest Addition.
- If you receive an error message, click “Continue anyway” until the installation is complete.
- This will allow you to seamlessly move your mouse pointer between Windows and Linux without having to use the Host key.
- Reboot when completed.

Additional Functions

- You should now be able to switch between a windowed screen and full screen.
 - Hold down the Host key [Ctrl] and press the [F] key on your keyboard.
 - It may take a second for the screen to resize, but you should now be in full screen mode.
 - You can leave the full screen mode by holding down the Host key and pressing [F] again.

Configure Shared Folders

- Access your shared folder in Windows XP.
- Open “My Network Places.”
- Click on “Add a network place.”



- In the Add Network Place Wizard, click “Next.”
- Choose another network location.



Shared Folders Continued

- Click “Next.”
- Click “Browse.”
- Click on the “+” symbol next to “VirtualBox Shared Folders.”
- Click the next “+” symbol until you find the name of your shared folder.
- Select the name of your folder.

Shared Folders Concluded



- Click “OK.”
- Click “Next.”

Access Your Shared Folder

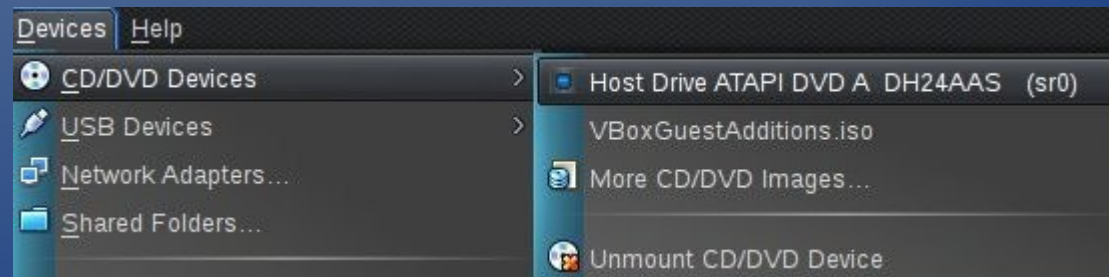
- Open “My Computer.”
- Your shared folder should now be displayed as a network drive in Windows.



- Double-click on the drive to open the folder.
- This configuring process is similar in Vista and Windows 7.

Optical Drive Settings

- You can switch between optical drives on-the-fly.
- Click on “Devices” at the top of the VirtualBox windowed screen and select the drive you wish to use.



Optional Method

- You can achieve the same results by accessing the optical drive icon at the bottom of the VirtualBox windowed screen.



Porting the .vdi File

- The virtual hard drive (.vdi file) can be backed up and moved to another computer with VirtualBox installed.
- This method can also be used to archive your virtual guest OS for re-installation later.
- Because the entire OS is backed up, there is no need to re-activate.
- Full instructions can be found at our Web site:
<http://www.computerforumz.com/showthread.php?t=8591>

VirtualBox vs Qemu

- Qemu is a program very similar to VirtualBox.
- VirtualBox is based in part on Qemu.
- The two programs will conflict if installed on the same system.
- You may get this error message when attempting to run VirtualBox:
 - *VirtualBox can't operate in VMX root mode. Please disable the KVM kernel extension, recompile your kernel and reboot.*

VMX vs KVM

- VMX (Virtual Machine Manager).
- KVM (Kernel Virtual Machine).
- The solution is to “purge” Qemu from the system and only use VirtualBox.
- To purge, or uninstall, Qemu, open a terminal and type the following code:
 - *sudo apt-get remove qemu-kvm qemu --purge*
 - Hit the [Enter] key and type in your password.
 - Hit [Enter] again.

Miscellaneous Information

- If you give Windows access to the Internet on a regular basis, you will want to install virus protection software.
- Update Windows.
 - You can download updates directly from:
softwarepatch.com
- Install Direct X drivers.
- Explore all the possibilities that VirtualBox has to offer.
- Enjoy and have fun!

Additional Resources

- Further information about VirtualBox can be found at:
 - virtualbox.org
 - virtualbox.org/wiki/Documentation
 - en.wikipedia.org/wiki/VirtualBox
 - en.wikipedia.org/wiki/QEMU



computerforumz.com

Special Thanks To:


OpenOffice.org



Ultimate Edition
ultimateedition.info



Powered By

Linux